
IBM Integration Bus Update

Andrew Humphreys, IBM Integration Bus Product Manager





More endpoints need connecting than ever before

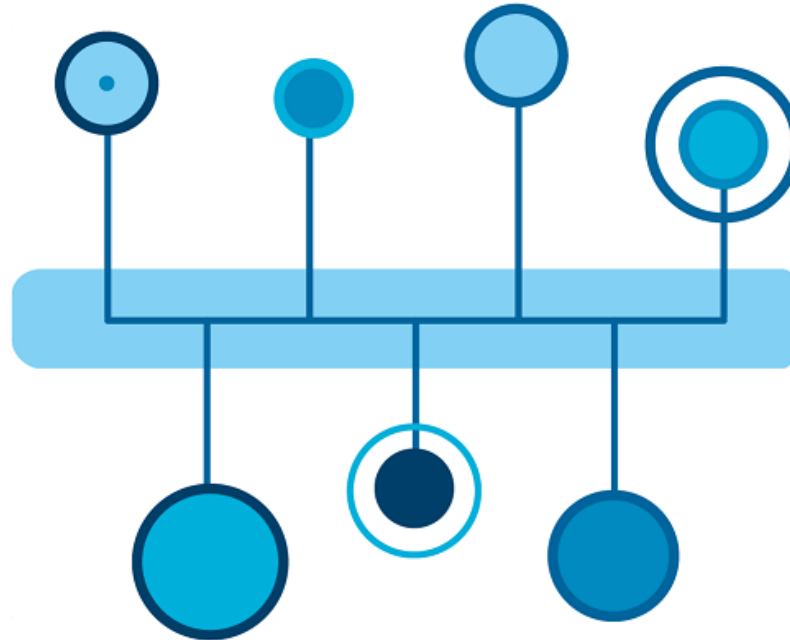
New sources of data are changing the world



Rapidly evolving integration requirements

IBM Integration Bus

Provides heterogeneous connectivity across enterprise systems, applications and data



IBM MQ

The messaging backbone that provides reliable transport and data delivery across enterprise systems and applications

What makes IBM Integration Bus the Market Leader?

Scalability and Performance

High message volumes in complex IT environments



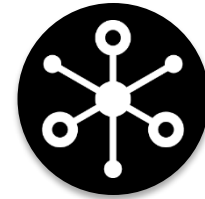
Ease of Use

Client choice of developer tools
Extensive open standards support



Connector Range

Large breadth of adapters, platforms and protocols



Multiple Editions

Different editions to suit different requirements and budgets



IBM Support

Over 4,000 certified specialists, extensive network of Business Partners and ISVs

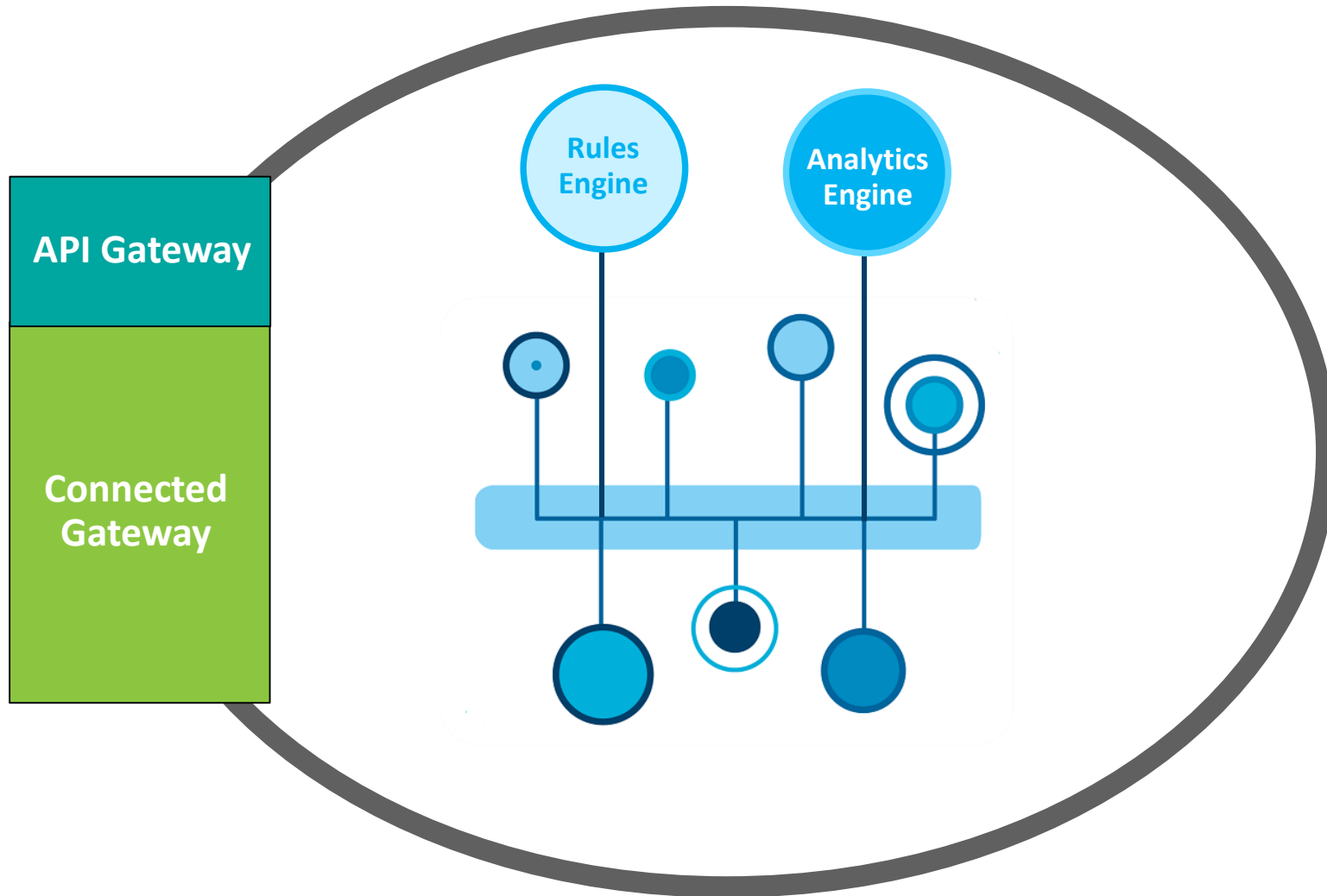


Extended Value

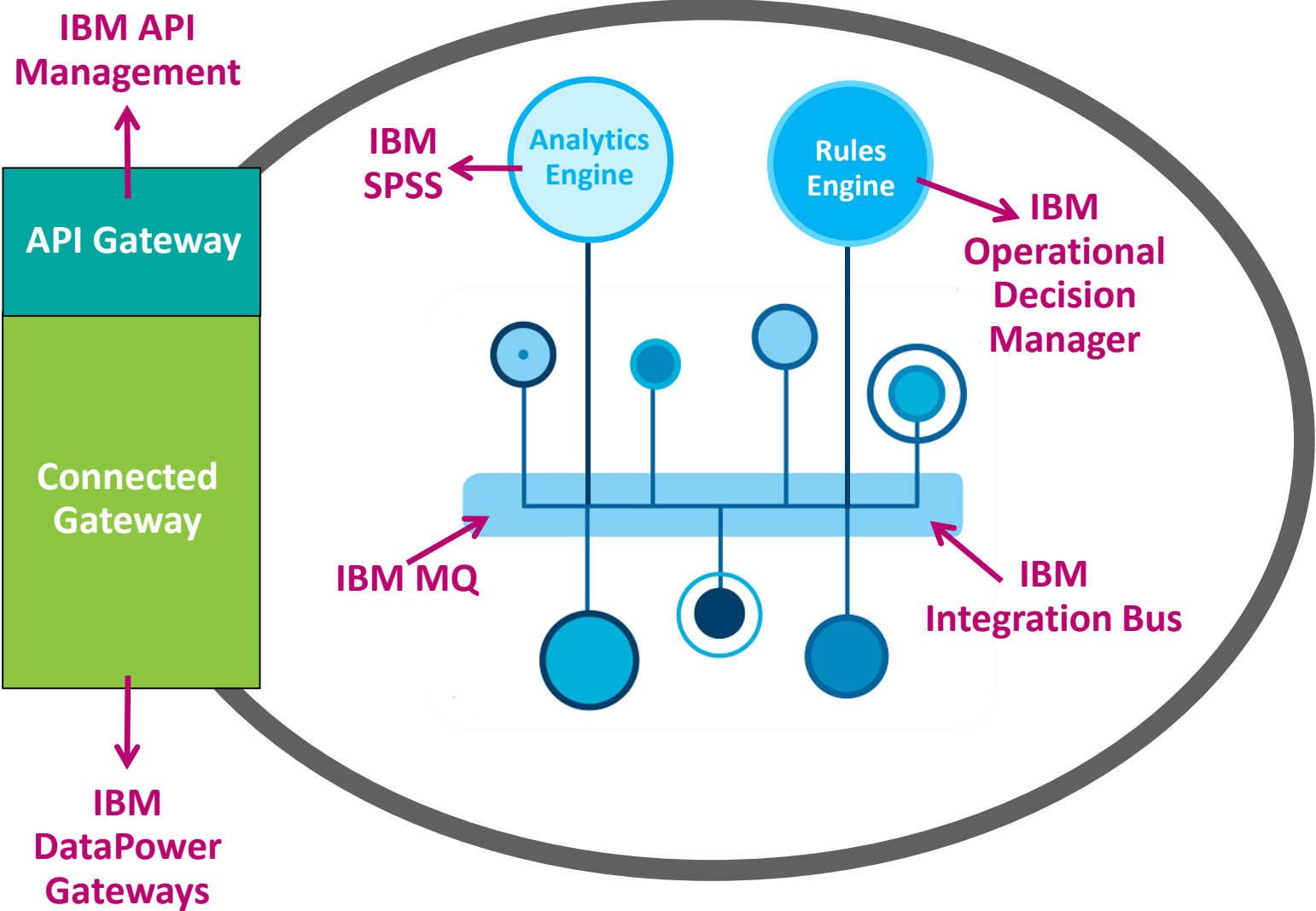
:Built in features that simplify and extend value



De-militarized zone



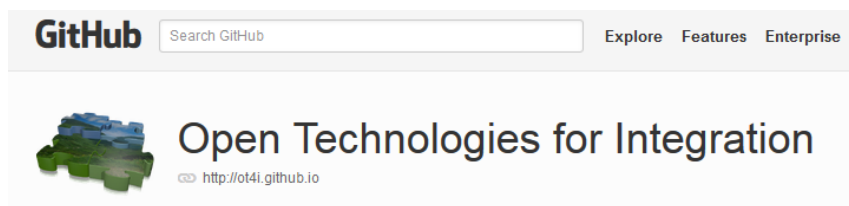
De-militarized zone



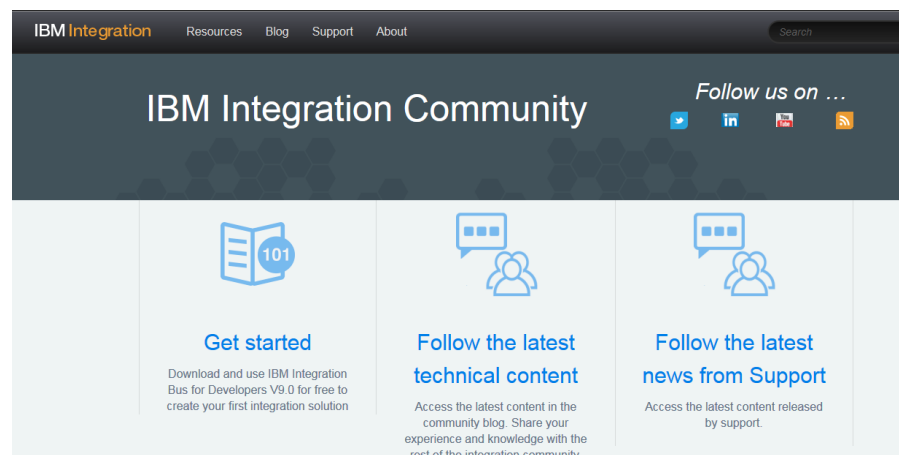




- OT4I on GitHub: Exploit and contribute to open source integration components
- No charge Developer Edition, open beta
- No charge for development & FVT environments
- Developer Outreach: Integration Community, Forums, Developer micro sites



<https://github.com/ot4i>



<https://developer.ibm.com/integration/>

Express

Entry level offering to connect departmental applications and databases.

Standard

Full function edition for customers that do not need to have large numbers of flows or run high volumes of traffic.

Advanced

Full function and scalable edition. High performance connectivity to the broadest range of data and applications

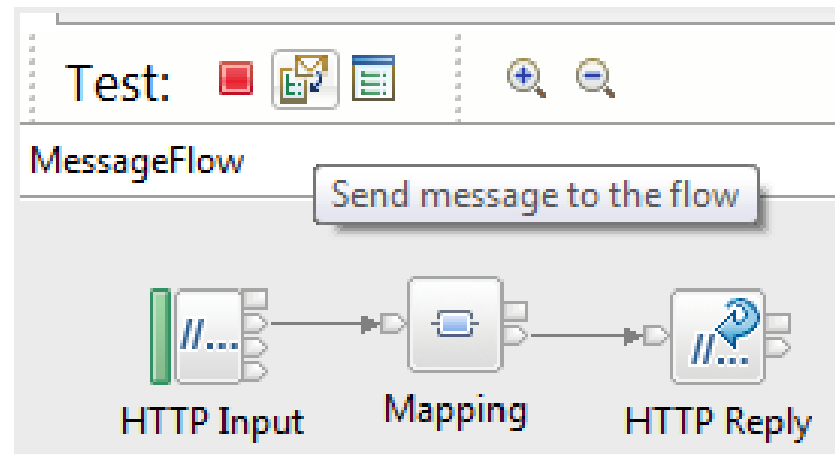
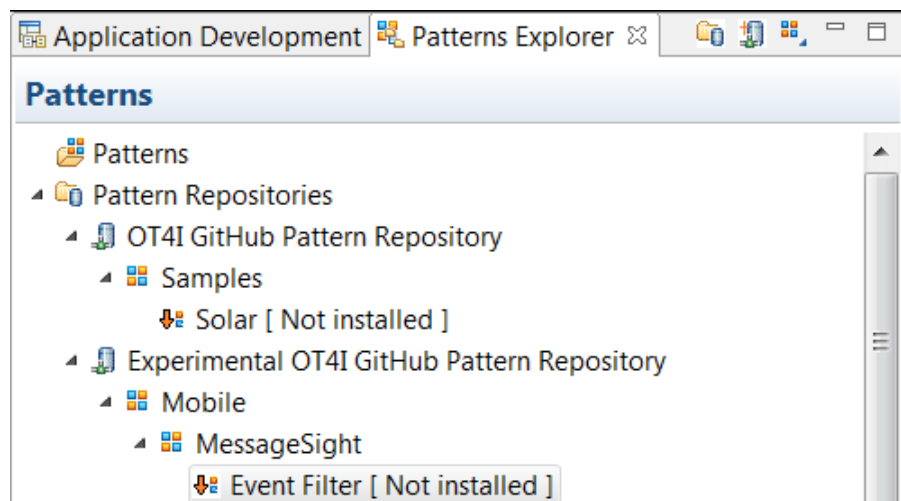
Why choose IBM Integration Bus*

- “Highly customizable, capable of integrating with data on over 80 platforms, makes integration intuitive.”
- “IBM’s longevity in the space combined with its overall reach and market strategy make it the leading integration solution vendor in the space today.”
- “Entry-level pricing may make it enticing for smaller companies”

* InfoTech Research Group, May 2013



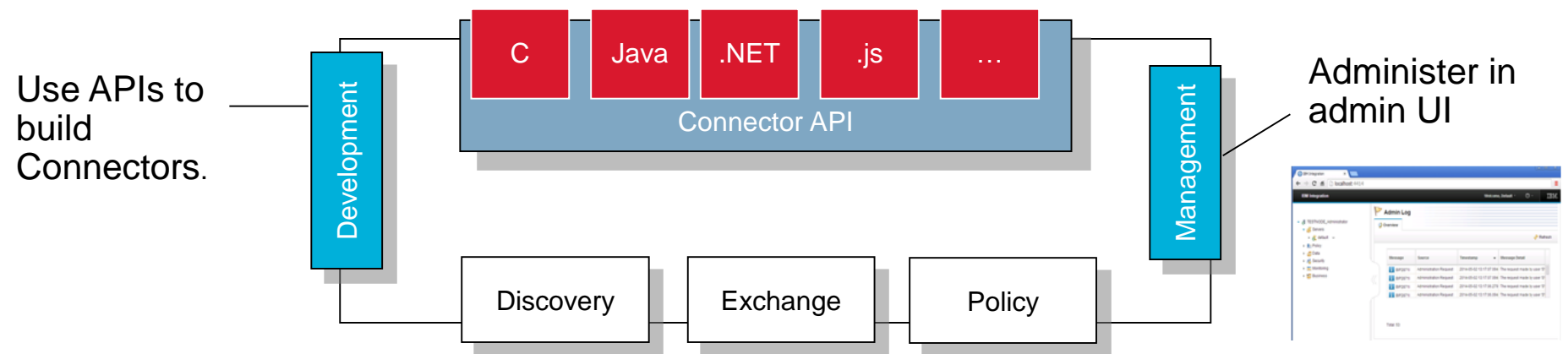
- Transform natively in Graphical, Java, .NET, XSLT and more
- Built-in unit testing
- Patterns and tutorials
- Shared libraries
- Web UI for runtime administration



[Download and Install](#)

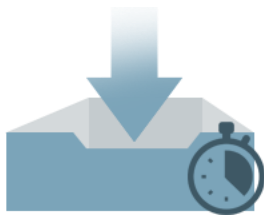
Rating : Popular **Size :** 68 KB **IBM Supported :** Yes

- **New endpoints are everywhere**
 - Need different systems to have their input and outputs defined as services, events & documents
- **Framework simplifies connector development**
 - Discovery: Understand & capture the end system inputs and outputs
 - Exchange: Send data to and from these systems, using event, service, document metaphor
 - Policy: Control behaviour dynamically





- Zero pre-reqs
- MQ Flexibility
- Radically simplified packaging and installation, install in under 10 mins
- Broad range of OS and hardware platforms
- Simple migration & WESB conversion



- **Provide more flexible topology options for MQ access**

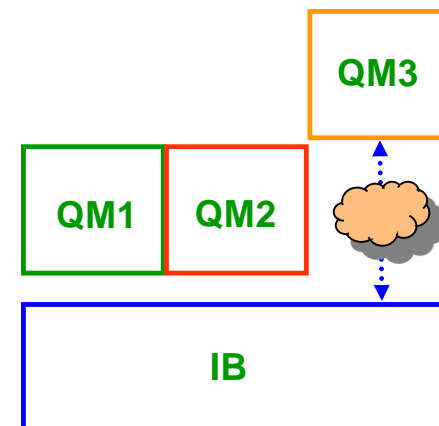
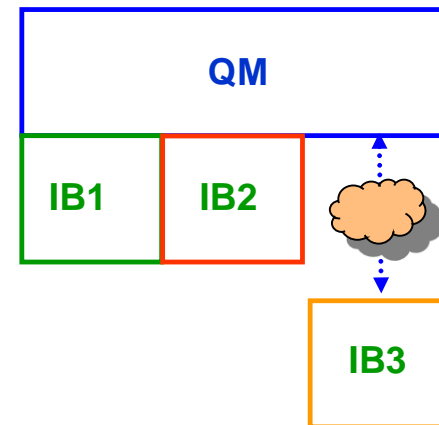
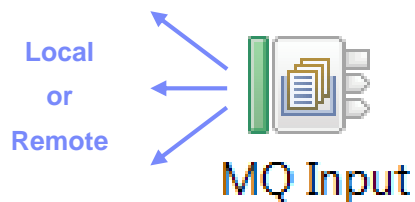
- Benefits include simplicity, scalability, availability & migration

- **Supports for Local and Remote queue managers**

- Input node supports both local & remote queue managers
- Includes easy-change policy based control of sources
- Also applies to MQGet and MQOutput/MQReply nodes

- **When a queue manager is not available...**

- Connection management and retry defined



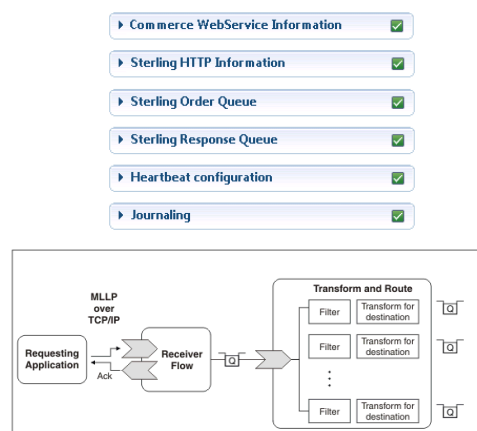
- Each pack is a separately purchased, fully supported software product, built on IBM Integration Bus: Healthcare, Retail, Manufacturing
- Provide industry-specific development accelerators for common industry integration problems
- Provide industry specific pricing e.g. store, factory and hospital per bed deployments



Industry Connectors & data formats

-  Association for Retail Technology Standards (ARTS)
-  TLOG (PoS Transactions)
-  Proprietary Medical Devices
-  OPC (industrial & Manufacturing)
-  Health Level 7
- Digital Imaging and Communication in Medicine (DICOM)

Integration Patterns



Domain specific Operational Views

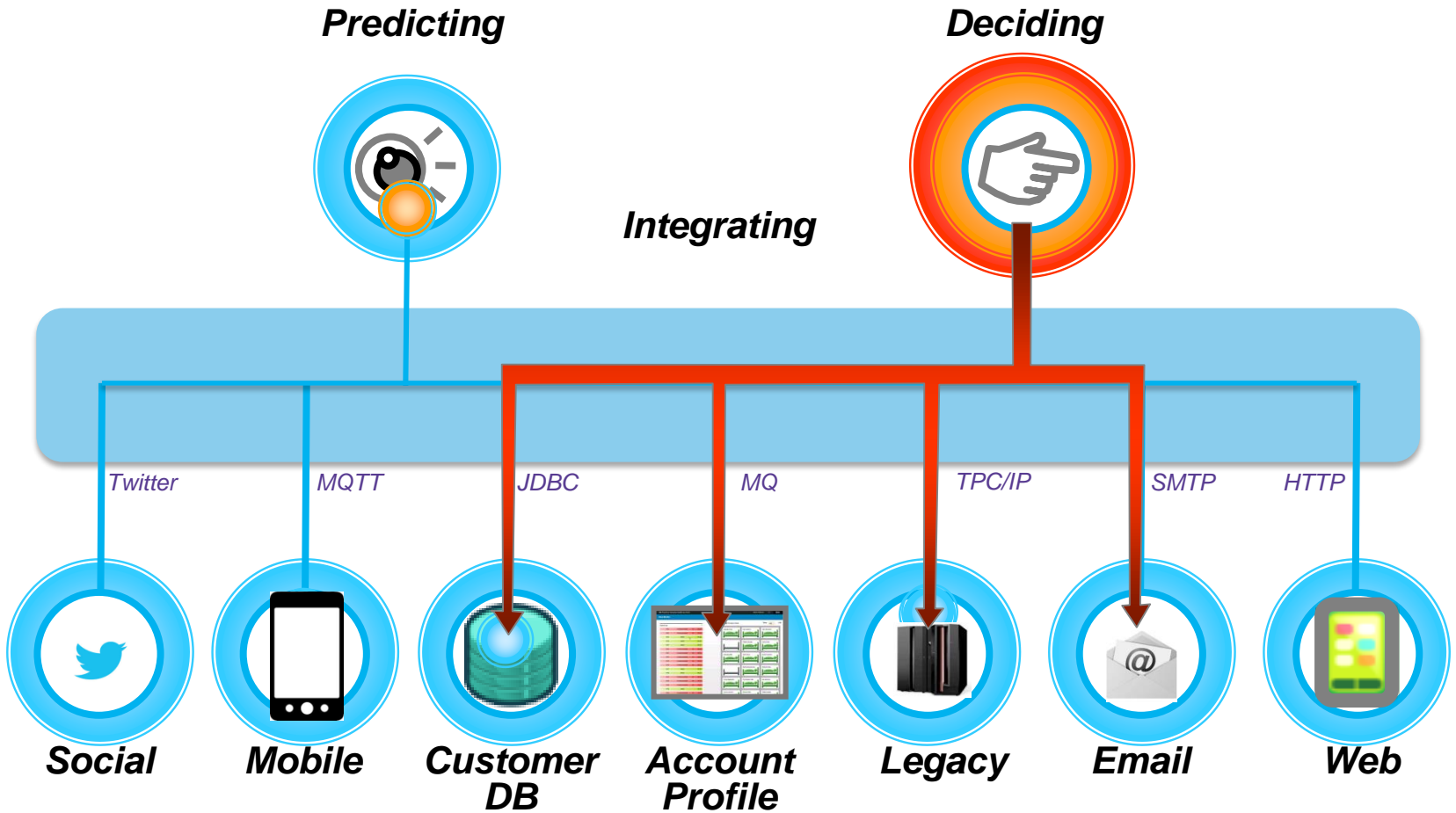




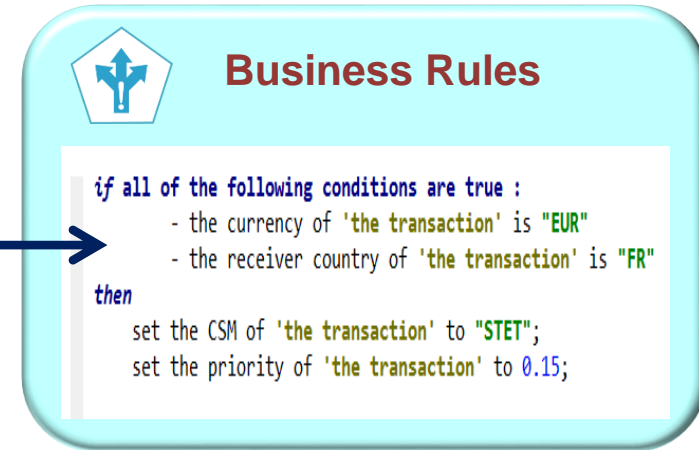
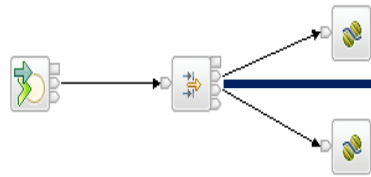
The value of data is greatest as soon as it is created



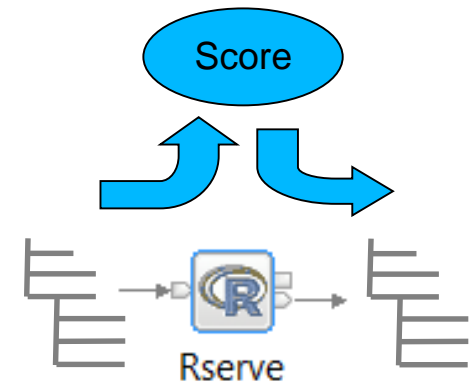
Reacting quicker than a competitor can give you a real advantage



- **Enable business insight to in-flight data**
 - Near real-time decisions influencing processing flow
 - Invoke Rules with built in decision service nodes to inform routing, validation and transformation within integration solutions



- **As data flows through the bus, score it against a predictive model**
 - Analytics node for model based decision making
 - Find & express patterns in data with analytics models
 - Analytics equivalent to Business Decision node
Pluggable engine for e.g. R, SPSS, SAS...



- Full IBM support on popular public IaaS options such as Softlayer, Azure and Amazon
 - Subscription / Rental pricing
 - Chef scripts, IBM UrbanCode plugins simplify provisioning
- Run IIB patterns on IBM Pure Application Service on SoftLayer
 - Fully integrated, managed environment, hosted on IBM SoftLayer
 - Automated provisioning of machines as well as deployment of middleware via IBM Patterns
- IIB Cloud managed offering* on IBM Cloud Marketplace
 - Rent dedicated server instance provisioned with IIB and managed by IBM
 - Development, deployment and admin through current toolset



IBM Cloud



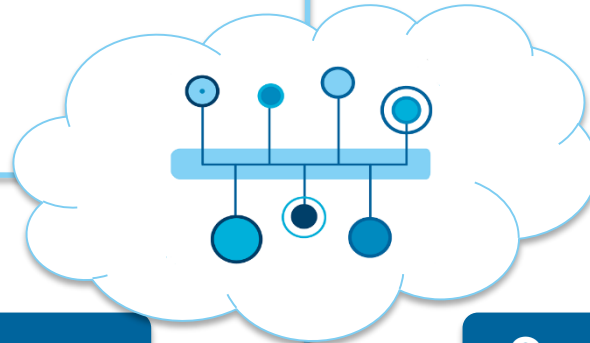
* Statement of General Direction in IIB v10 announce

Flexible Pricing

- Free trial environment for evaluation
- Paid environments charged by (virtual) machine capacity

Fully Supported and Managed Environment

- IBM provides and manages environment. Customer responsible for deploying flows



Ease of Use

- Provision a ready to use IIB topology in minutes
- Allows users to focus on developing solutions not on installing and configuring software

Compatible with IIB On-Prem

- Can be used for all IIB use case within the constraints of a cloud environment

Evaluation



Temporary applications



Agile dev/test environments



Host business partner solutions



Subscription based managed software



Variable capacity for seasonal spikes



IDC Predicts CMOs Will Drive **\$32.3B** In Marketing Technology Spending By 2018

The New Normal

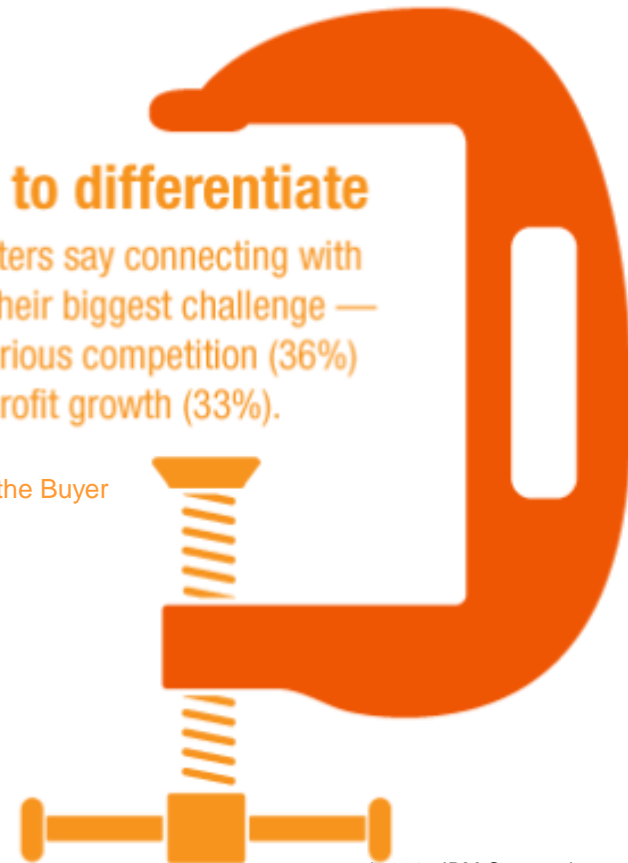
Customer experience was the top marketing technology investment, averaged 18% of total marketing budget in 2014, and is ranked the #1 innovation project for 2015

Gartner – Eye of the Buyer

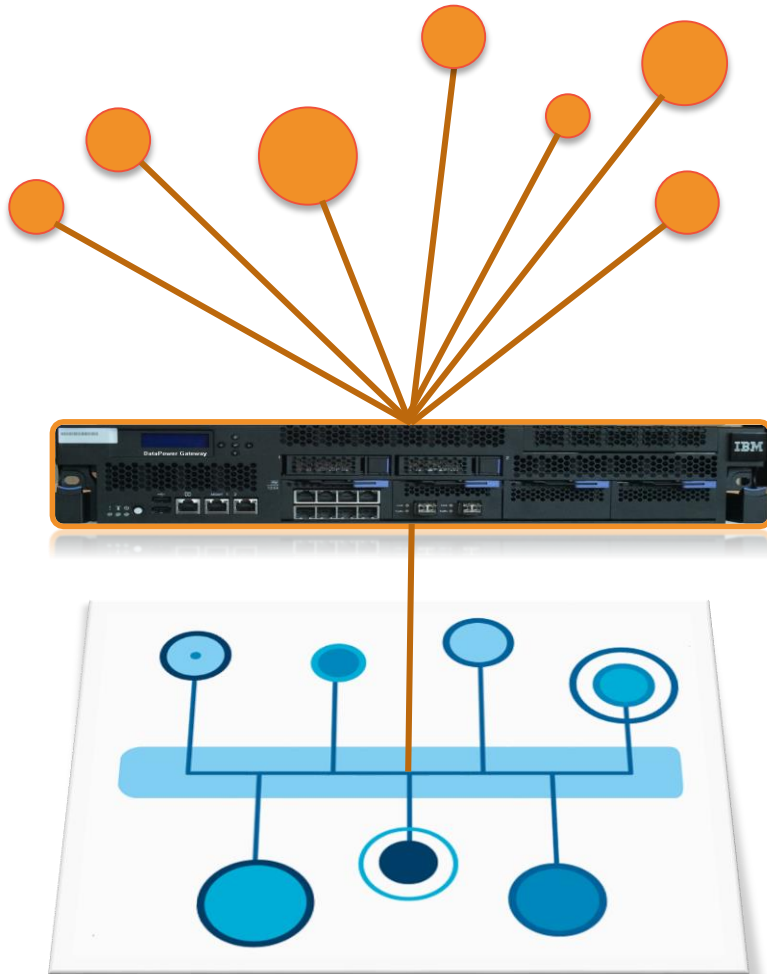
Pressure to differentiate

43% of marketers say connecting with customers is their biggest challenge — followed by serious competition (36%) and revenue/profit growth (33%).

Gartner – Eye of the Buyer

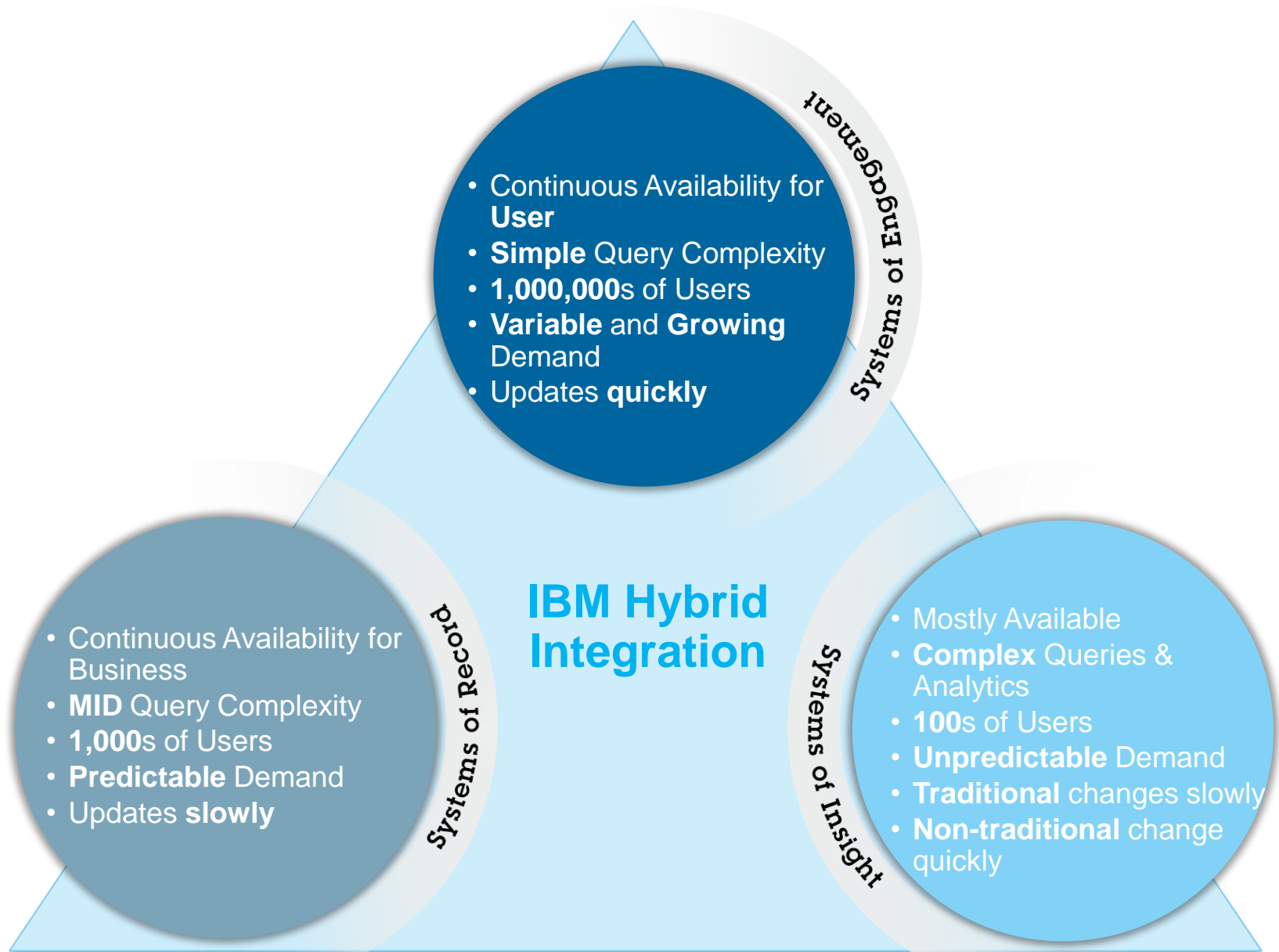


Record



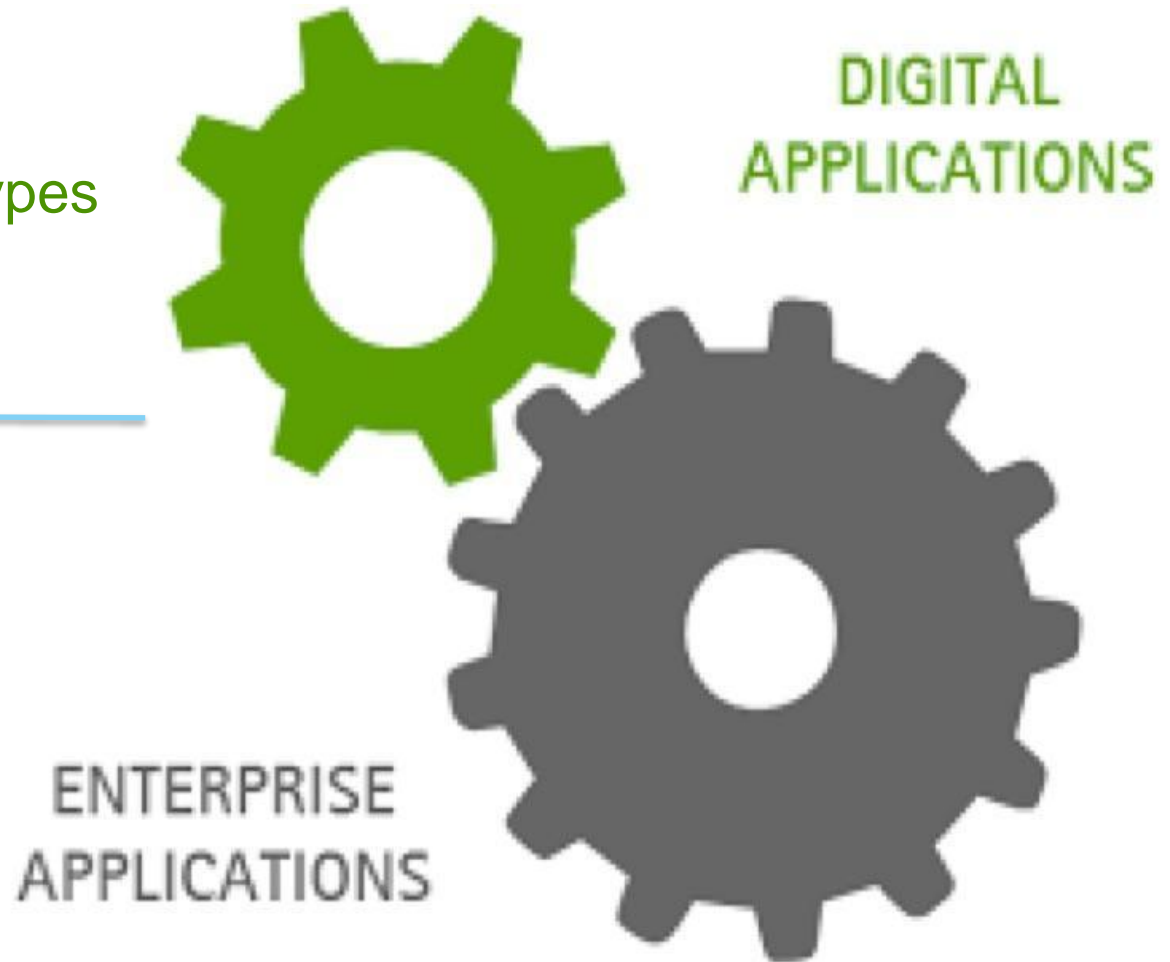
Interact





- Explore, adopt, adapt
- Rapid, Iterative prototypes
- Innovate through experimenting

-
- Always on, always available
 - Security, control, and governance
 - Transactional integrity



Digital Integration

Startup Developer

Integration requirements driven by needs of building engaging apps.



LOB Developer

Works on tactical lines of business projects e.g. HR. Dealing with SaaS projects, e.g. CRM and analytics and mobile extensions.



Data Scientist

Overwhelmed with new available data sources. Needs to extract data from multiple on-prem and cloud sources, clean, de-dup, manage and analyze



Enterprise Integration

CIO

Aligns IT initiatives with business goals, determine if IT spend meets business initiatives.



Integration Architect

Responsible for providing a platform to create and operate horizontal, standardized, scalable SOE and SOR services.



Integration Developer

Builds integrations between different systems. Builds standardized, scalable, reusable service interfaces and APIs.





IBM API Management

Exposes data for internal/external developers to innovate businesses into the digital world



Cloud Integration Service

Integration driven by need to develop apps for Systems of Engagement



IBM CastIron

Synchs data with SaaS apps to leverage the new cloud economy

IBM Integration enables customers to take advantage of **new business opportunities**



Unconnected

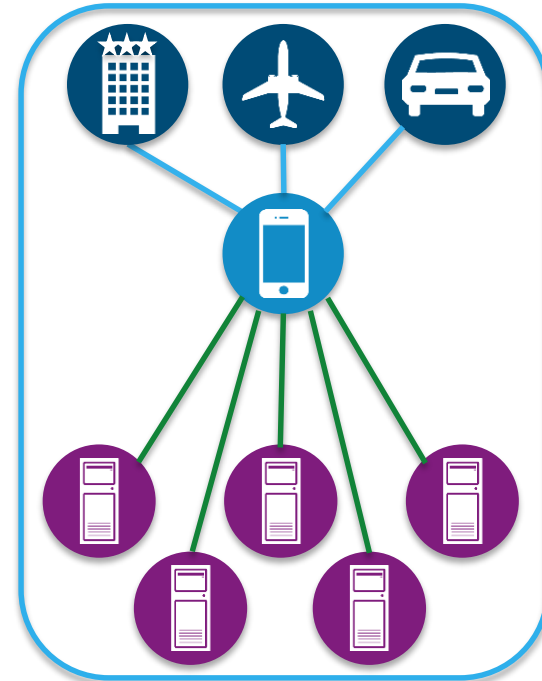


Back-end systems




- x Bad customer experience
- x Negative perceptions
- x Lose customers
- x Less revenue

Connected



- ✓ Good customer experience
- ✓ New opportunities
- ✓ Repeat custom
- ✓ More revenue

- Innovation now starts fast and small within the LoBs. Traditional integration tools are not equipped to support these new projects.
- New projects need access to IT systems to interact.
- New projects are driven outside the CIO office, creating a need for collaboration that does not interfere with speed of innovation and time to market.



So many great new tools in the cloud. I want to build stuff myself, but I need access to data, simple tools, and ways to collaborate with other teams...

Startup Developer



All these new LoB users are building new stuff with my precious data. I need to control what they're doing and make sure it works with my stuff...

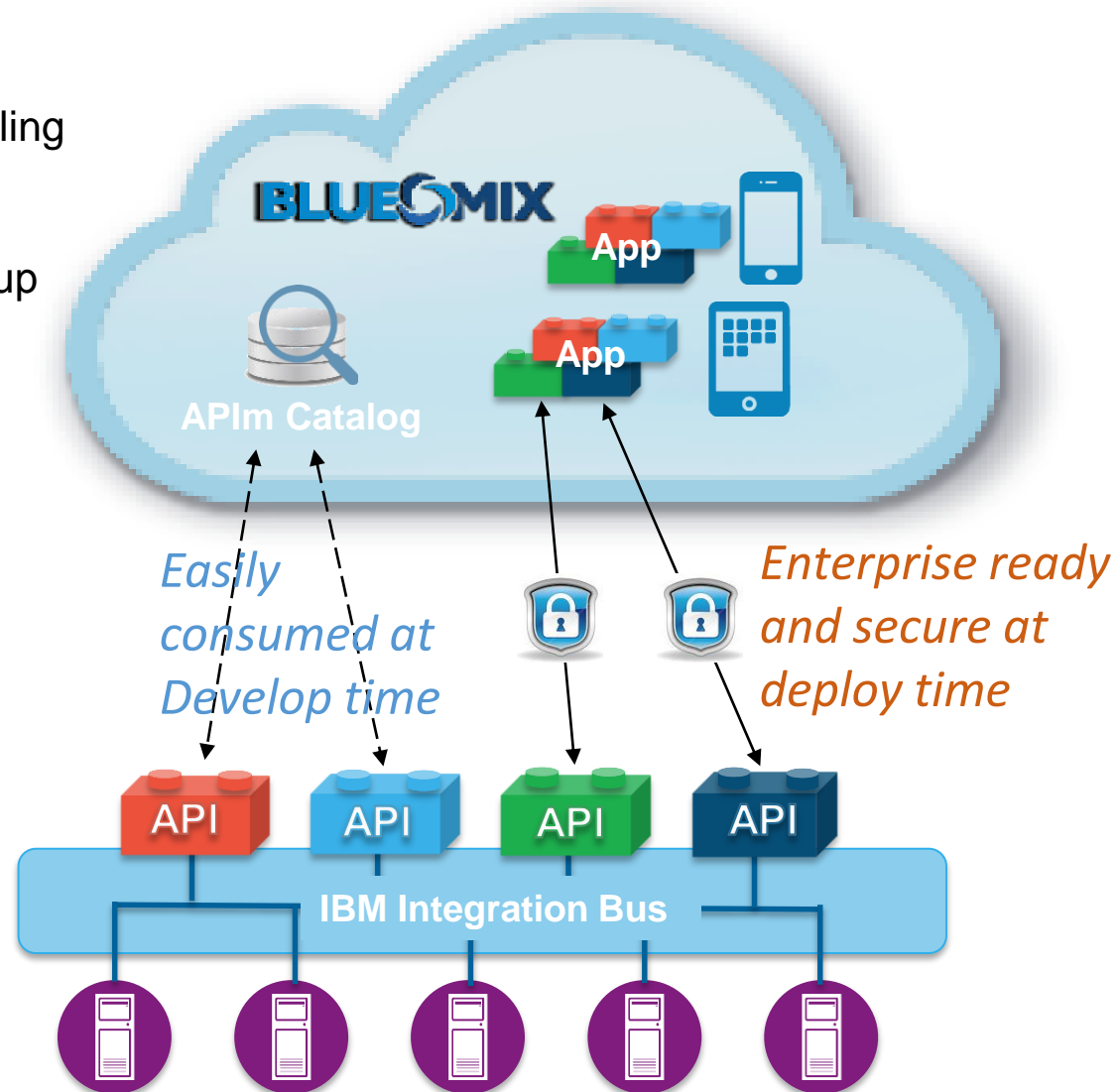
Integration Architect

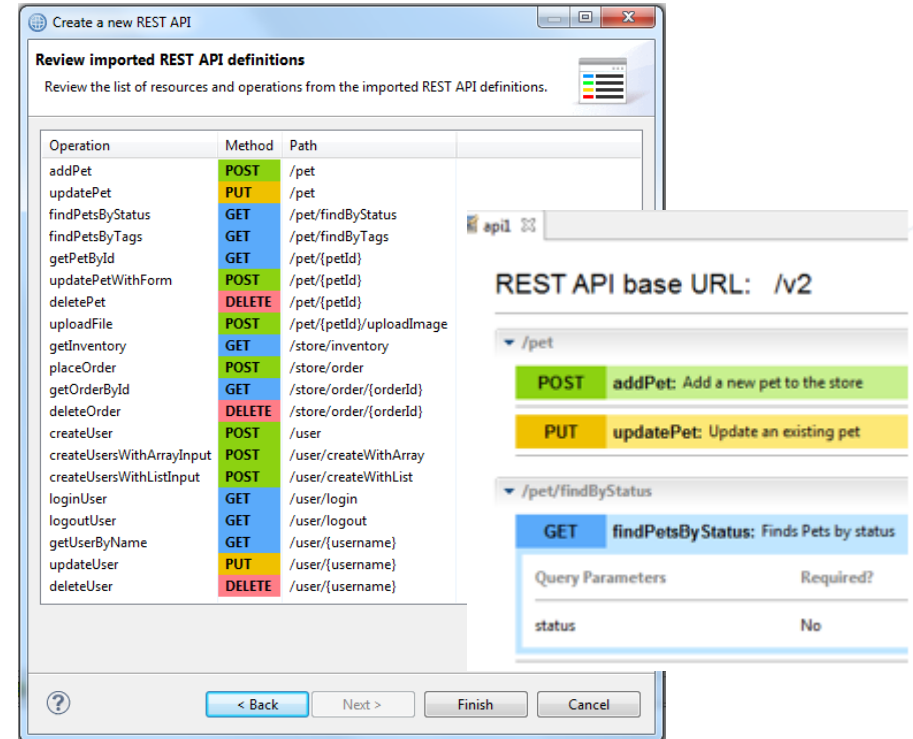
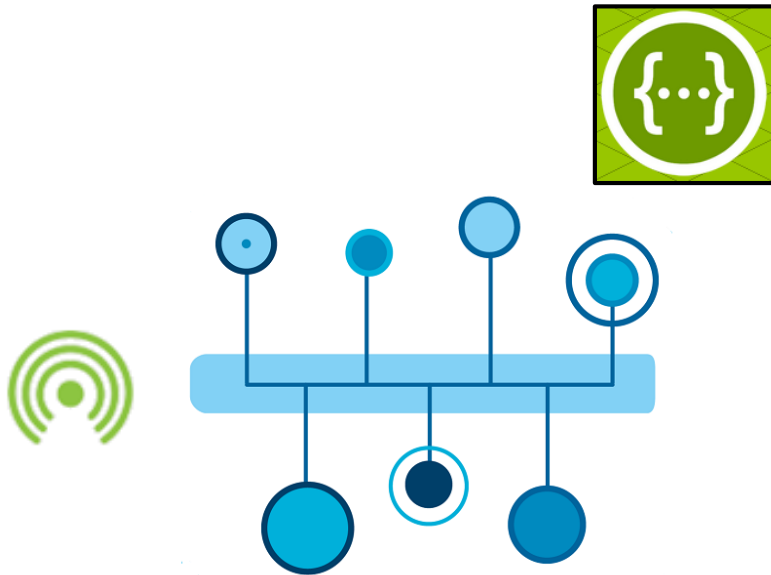
Bluemix Developer

- Quickly builds SOE apps by assembling and invoking APIs from Bluemix Catalog
- Self service - No SLA's to negotiate up front
- Saves assembled APIs to catalog

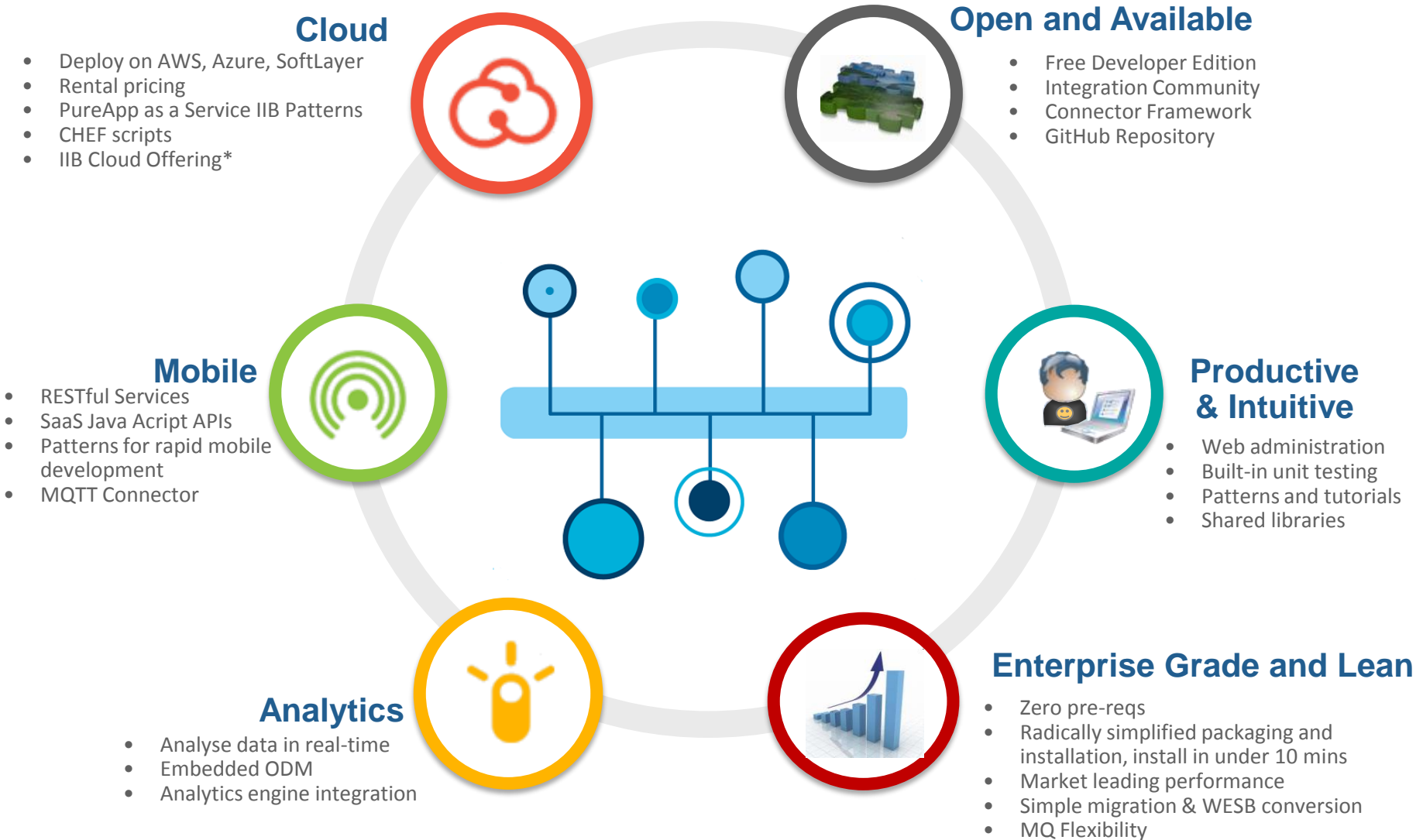
IIB Integration Developer

- Rapidly creates APIs that expose SOR interfaces and facade complex integration requirements
- Loads APIs into Catalog, SLA's and governance built in
- Startup Developer can access them
- Search and invoke APIs from catalog to extend reach of bus





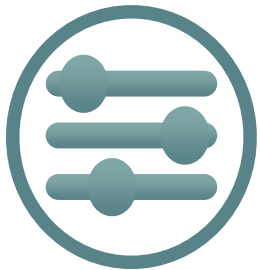
- New REST API Project
- Schemaless mapping
- Invoke integration directly from programs using a API
- Generate JavaScript API from a service
- Import Swagger 2.0 definitions, clients can use existing Swagger tools and projects to retrieve Swagger definitions
- Patterns for rapid mobile development





Simplicity

- Radically simplified single package installation and improved support for unit test.
- Flexibly interact with WebSphere MQ (using connection policies) by exchanging messages with local and remote queue managers.
- Simplified administration using an improved web browser user interface, which includes new capabilities for deployment, creating, editing, and attaching policy documents.
- Easy migration, directly migrate installed environments from v7, v8 and v9
- Rapidly create REST APIs and use new graphical data mapper support for the transformation of unmodeled data structures such as JSON messages.
- Reuse common resources such as message models, subflows, Java and ESQL code in shared libraries, leading to significant memory improvements.
- Integrate publish-subscribe based applications using MQ Telemetry Transport messages.
- Easily transform and model data structures with multiple new Graphical Data Map and DFDL features.
- Extend the reach of the IBM Integration Bus with file, database, and security enhancements.
- Create new application connectors and control them using independently managed policies.
- Import and convert existing IBM WebSphere Enterprise Service Bus integration assets so they can run on IBM Integration Bus.
- Share product extensions with the integration community, including an enhanced explorer configured to access a GitHub repository of IBM Integration Bus patterns.



Flexibility



Connectivity